

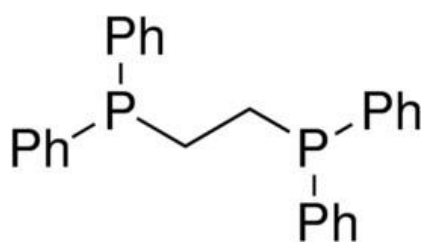


Main office  
603157 24G-U, Sormovskoe shosse  
N.Novgorod, Russia  
T: +7 831 241 22 32

Главный офис  
603157 Россия, Нижний Новгород,  
Сормовское шоссе, 24Г, литер У  
Т: +7 831 241 22 32

E: [sales@synor.ru](mailto:sales@synor.ru) W: [www.synor.ru](http://www.synor.ru)

## PRODUCT SPECIFICATION



Product Name	<a href="#">1,2-Bis(diphenylphosphino)ethane</a>
CAS Number	1663-45-2
Molecular formula	C <sub>26</sub> H <sub>24</sub> P <sub>2</sub>
Linear formula	(C <sub>6</sub> H <sub>5</sub> ) <sub>2</sub> PCH <sub>2</sub> CH <sub>2</sub> P(C <sub>6</sub> H <sub>5</sub> ) <sub>2</sub>
Molecular weight	398.42
Sensitivity	air
Melting point	137-142C

TEST	SPECIFICATION
Assay (purity)	99%
Purity method	by HPLC
Appearance	white powder
NMR	conforms to structure
NMR P31	conforms to structure

For available packaging options or alternative purify grades please contact our technical services.

The offered information is intended to be used by technically qualified personnel at their discretion and risk. The current Specification sheet may be available at [synor.ru](http://synor.ru). Purchaser must determine the suitability of the product for its particular use.