

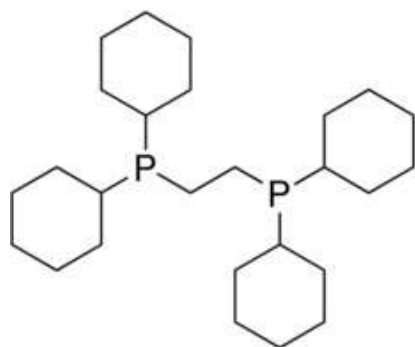


Main office  
603157 24G-U, Sormovskoe shosse  
N.Novgorod, Russia  
T: +7 831 241 22 32

Главный офис  
603157 Россия, Нижний Новгород,  
Сормовское шоссе, 24Г, литер У  
Т: +7 831 241 22 32

E: [sales@synor.ru](mailto:sales@synor.ru) W: [www.synor.ru](http://www.synor.ru)

## PRODUCT SPECIFICATION



Product Name	<a href="#">1,2-Bis(dicyclohexylphosphino)ethane</a>
CAS Number	23743-26-2
Molecular formula	$C_{26}H_{48}P_2$
Linear formula	$(C_6H_{11})_2PCH_2CH_2P(C_6H_{11})_2$
Molecular weight	422.61
Melting point	92.5-96.5C

TEST	SPECIFICATION
Assay (purity)	98%+
Purity method	by integration NMR
Appearance	white to off-white powder or crystals
NMR	conforms to structure
NMR P31	conforms to structure

For available packaging options or alternative purify grades please contact our technical services.

The offered information is intended to be used by technically qualified personnel at their discretion and risk. The current Specification sheet may be available at [synor.ru](http://synor.ru). Purchaser must determine the suitability of the product for its particular use.