

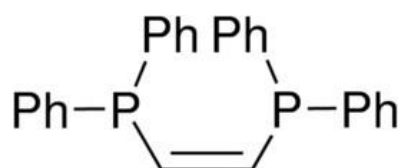


Main office  
603157 24G-U, Sormovskoe shosse  
N.Novgorod, Russia  
T: +7 831 241 22 32

Главный офис  
603157 Россия, Нижний Новгород,  
Сормовское шоссе, 24Г, литер У  
Т: +7 831 241 22 32

E: [sales@synor.ru](mailto:sales@synor.ru) W: [www.synor.ru](http://www.synor.ru)

## PRODUCT SPECIFICATION



Product Name	<a href="#">Cis-1,2-Bis(diphenylphosphino)ethylene</a>
CAS Number	983-80-2
Molecular formula	$C_{26}H_{22}P_2$
Linear formula	$(C_6H_5)_2PCH=CHP(C_6H_5)_2$
Molecular weight	396.40
Sensitivity	air
Melting point	122-124C

TEST	SPECIFICATION
Assay (purity)	97%
Purity method	by integration NMR
Appearance	white powder or crystals
NMR P31	conforms to structure

For available packaging options or alternative purify grades please contact our technical services.

The offered information is intended to be used by technically qualified personnel at their discretion and risk. The current Specification sheet may be available at [synor.ru](http://synor.ru). Purchaser must determine the suitability of the product for its particular use.